

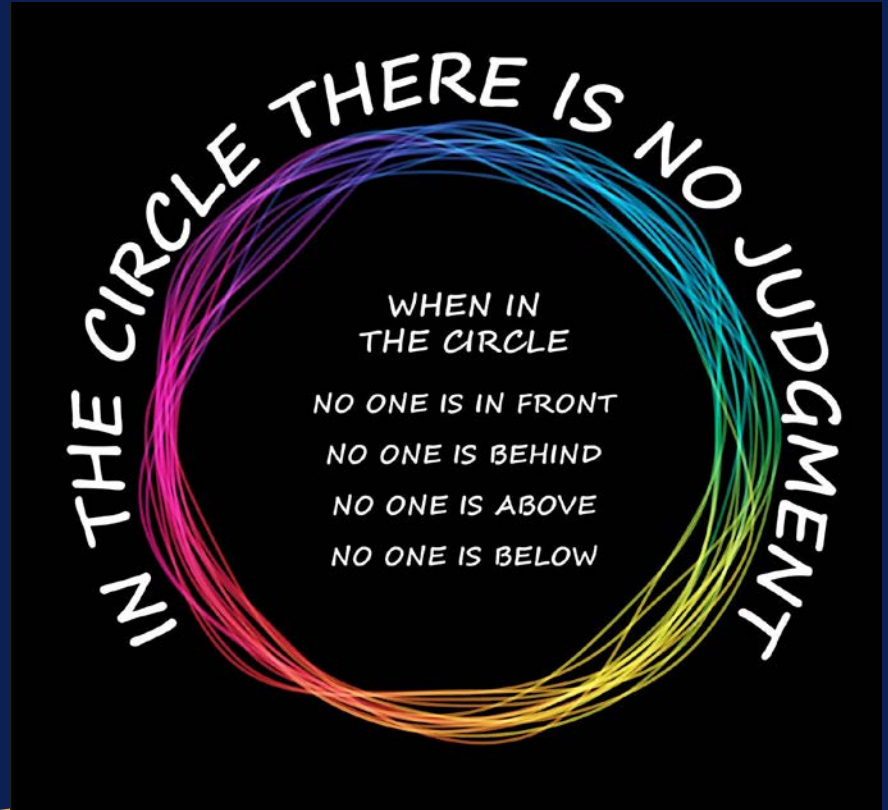
# Connectedness

---

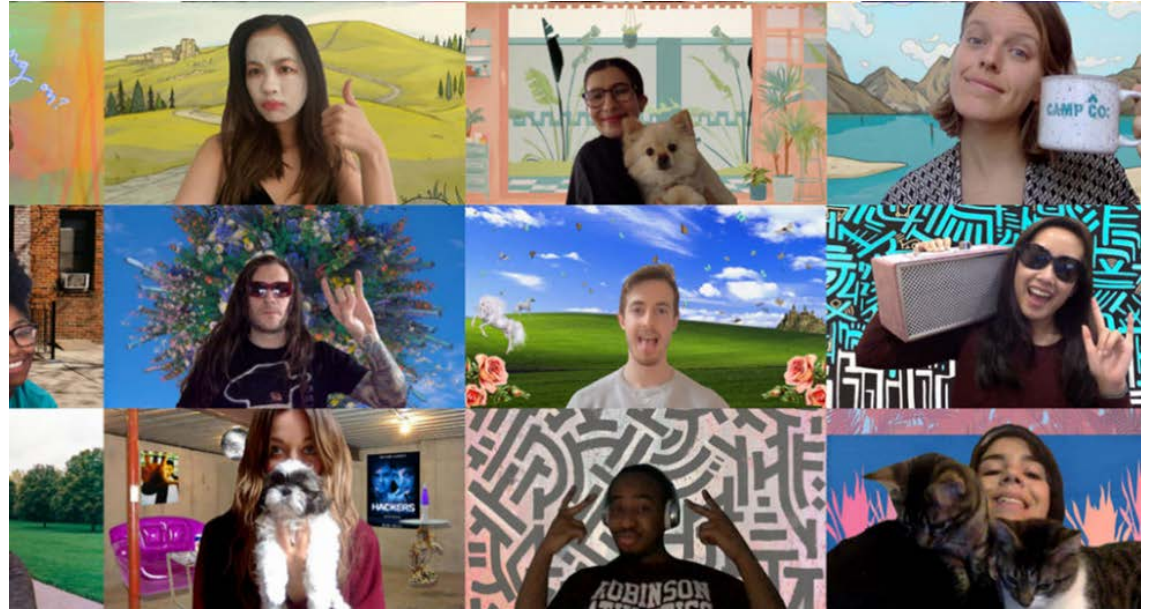
**National  
School  
Redesign  
Showcase:  
Welcome  
Back**

# Connection Circle

Belonging  
Equity of Voices  
Respect  
Co-creation  
Community



Share your name,  
school and one  
thing you love  
about your team



# How might our schools allow and promote joy?



## Agency

the ability to take action and/or choose what action to take.



## Belonging

being accepted as you truly are and as an equal participant in how things are created.



## Connectedness

engaging in meaningful activities with supportive adults & peers where you are seen, heard, and valued.

# Making Genuine Connections

Oneness - wondering who another person is setting aside any prejudgements

Connection happens when when you meet somebody without a need-to-complete-this or need-to-complete-that letting your mind be free of an agenda and able to be with another person



# Recap of our Community Timeframe

Form a team consisting of students, teachers, leaders, family and other community members.

**Designate a contact person.**

We engaged in session one in October and will engage in this and one additional virtual design session in December.

Share your experience with other schools involved in this design opportunity in February 6, 2024.

Selected teams will travel to Washington, DC in May 9 for an all-day session on May 9th with other design teams and educational policy leaders.

**EMPATHIZE**

**DEFINE**

**IDEATE**

**PROTOTYPE**

**TEST**



**EMPATHIZE**



# Last month in Team Breakouts

What shadowing experiences might our team want to set up?

Are there areas or events we might want to observe or pay attention to?

Each team member will conduct three interviews.

How will we capture what we see and hear?

What questions ?



## Today in Team Breakouts

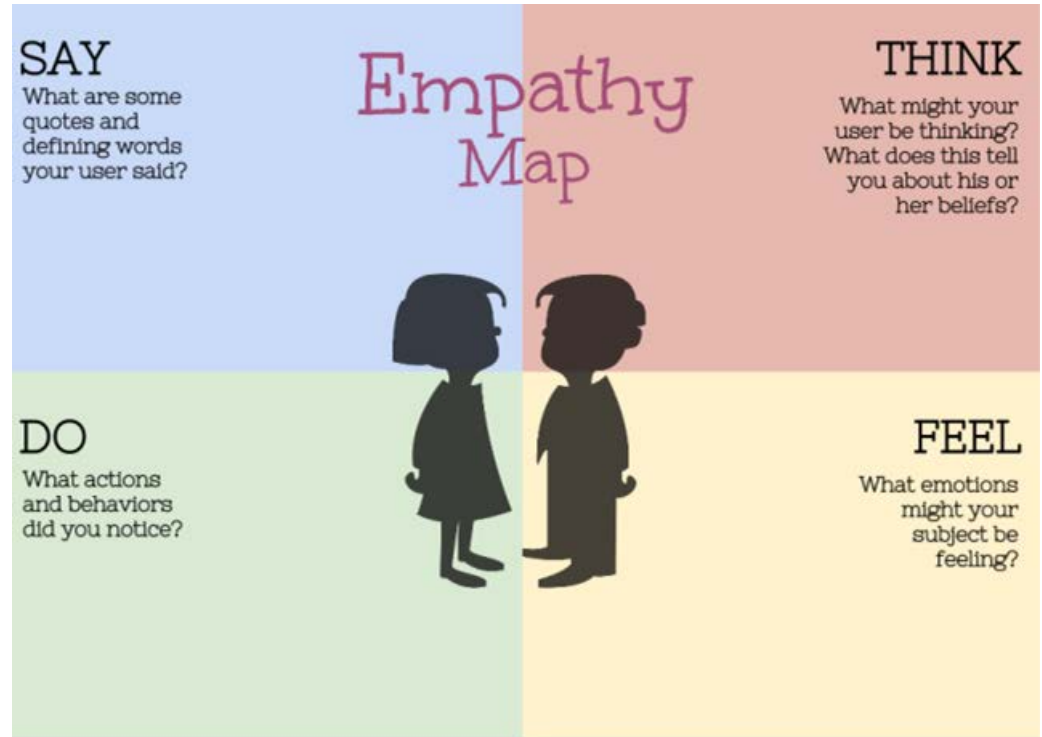
Share your experiences from shadowing, interviewing, observing.

Capture some of the things you heard people say, things they were doing or talked about doing, what they were thinking, how they might be feeling.

We are offering jamboards – you should use what serves your team best.

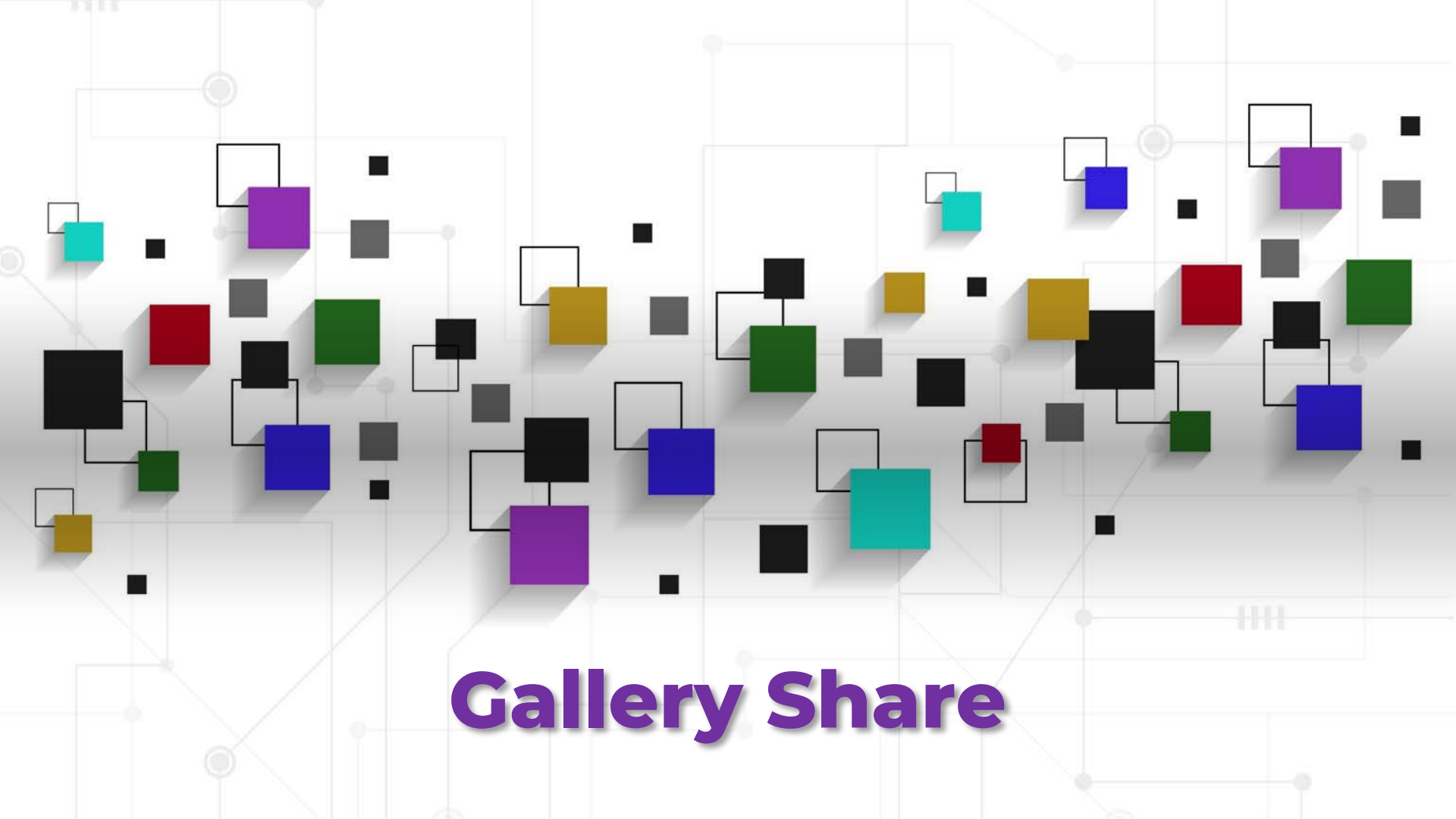
Create a storyboard of some of your insights.

Agree on one insight your team might like to share with the whole group.



Finally, find Needs and Insights of your user.

Created by @davidleedtecl  
Info from IDEO ([goo.gl/uJlQ8K](http://goo.gl/uJlQ8K))



# Gallery Share





**How might we identify spaces in our school community where connection naturally occurs?**



How might we identify circumstances in our school community that catalyze disconnection?

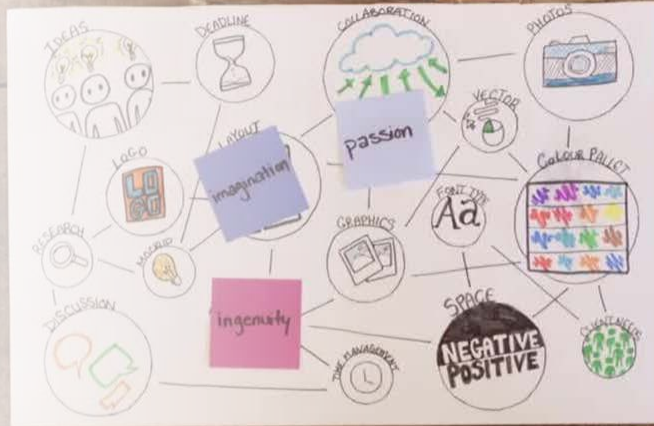
---

# Team Design Time in Breakouts

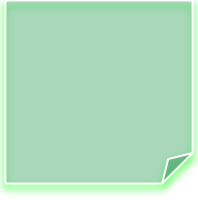
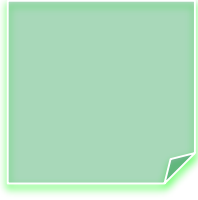
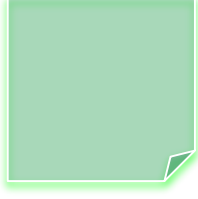
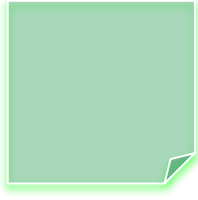
Based on your sharing of interviews, observations, shadowing and creating your empathy map and storyboard – are there areas you would like to build upon or amplify to support connection at your school?

Are there areas that came up as opportunities to create new spaces or loose structures?

Did anything surface as a catalyst of disconnection that you need to let go?



# Amplify, Create, Let Go





# Next Steps

Individually reflect on the following question:

What aspects of your environment stop you from being more connected to other people?

Sign up for Session Three

A word or phrase about your team's connection today





**Onward  
& Be Well!**

# Thanks!

Do you have any questions?

[mlinda@jhu.edu](mailto:mlinda@jhu.edu)

Please keep this slide for attribution

CREDITS: This presentation template was created by Slidesgo, including icons by Flaticon, infographics & images by Freepik, and illustrations by Storyset



