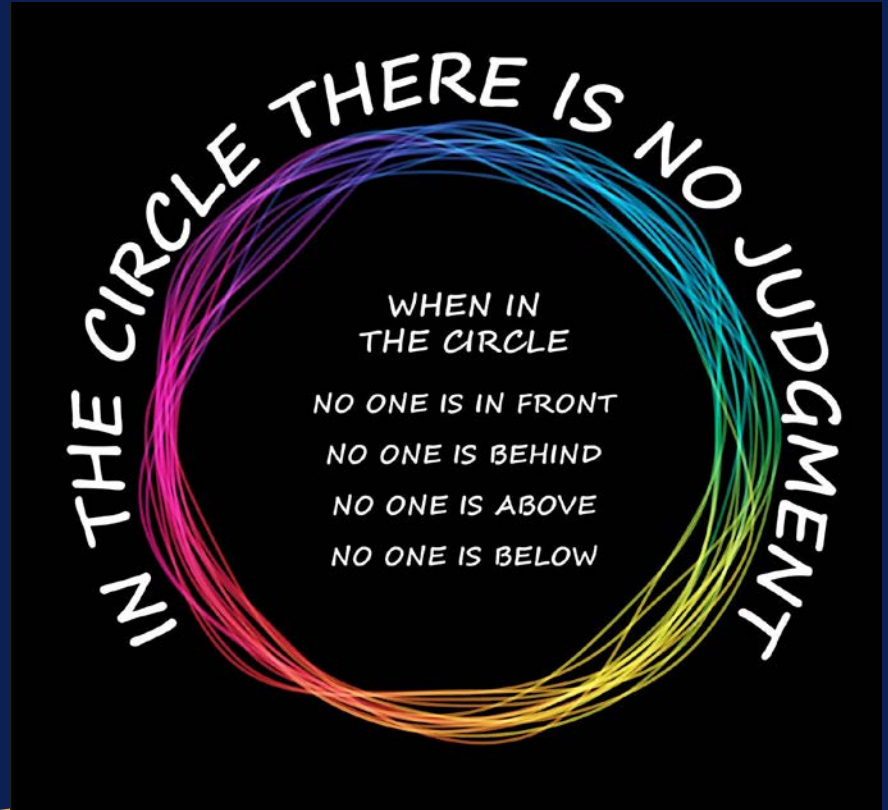


Agency, Belonging, Connectedness

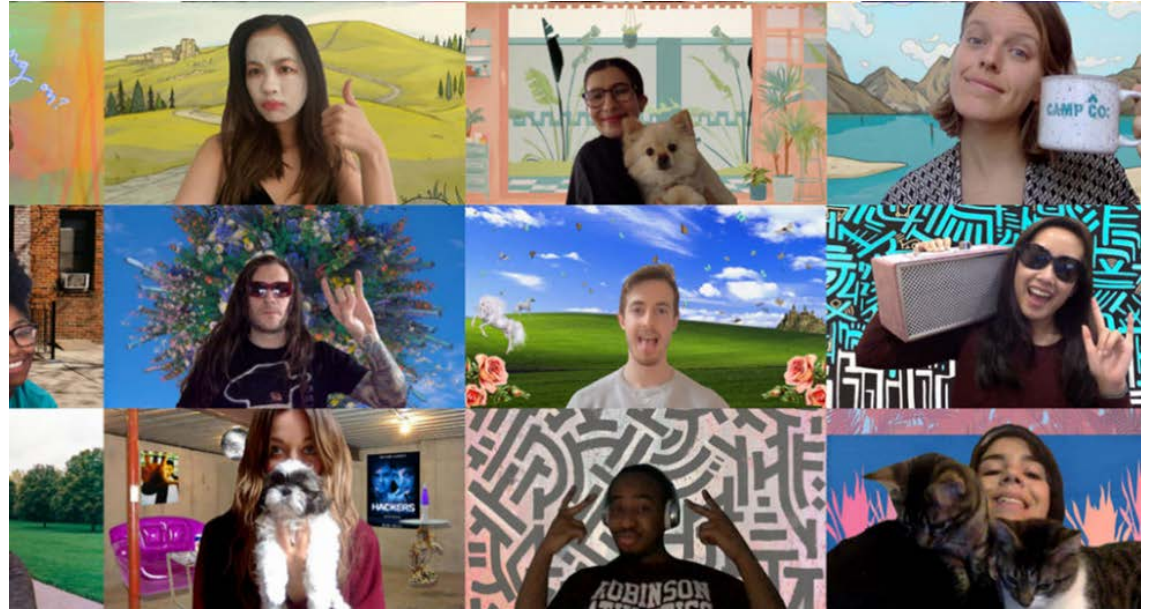
**National
School
Redesign
Showcase:
Welcome
Back to
Session
Two**

Connection Circle

Belonging
Equity of Voices
Respect
Co-creation
Community



Share your name,
school and one
thing you love
about your team



How might our schools allow and accept joy?



Agency

the ability to take action and/or choose what action to take.



Belonging

being accepted as you truly are and as an equal participant in how things are created.



Connectedness

engaging in meaningful activities with supportive adults & peers where you are seen, heard, and valued.

Agency

the ability to take
action and/or
choose what
action to take.



Agency is both Freedom and Response Ability.

Belonging is something you carry with you...



**being accepted as you truly
are and as an equal
participant in how things
are created.**

Connectedness

Openness – wondering who another person is setting aside any prejudgements

Connection happens when when you meet somebody without a need-to-complete-this or need-to-complete-that letting your mind be free of an agenda and able to be with another person



Recap of our Community Timeframe

Form a team consisting of students, teachers, leaders, family and other community members.

Designate a contact person.

We engaged in session one in October and will engage in this and one additional virtual design session in December.

Share your experience with other schools involved in this design opportunity in February 6, 2024.

Selected teams will travel to Washington, DC in May 9 for an all-day session on May 9th with other design teams and educational policy leaders.

EMPATHIZE

DEFINE

IDEATE

PROTOTYPE

TEST



EMPATHIZE

Last month in Team Breakouts

What shadowing experiences might our team want to set up?

Are there areas or events we might want to observe or pay attention to?

Each team member will conduct three interviews.

How will we capture what we see and hear?

What questions ?



Today in Team Breakouts

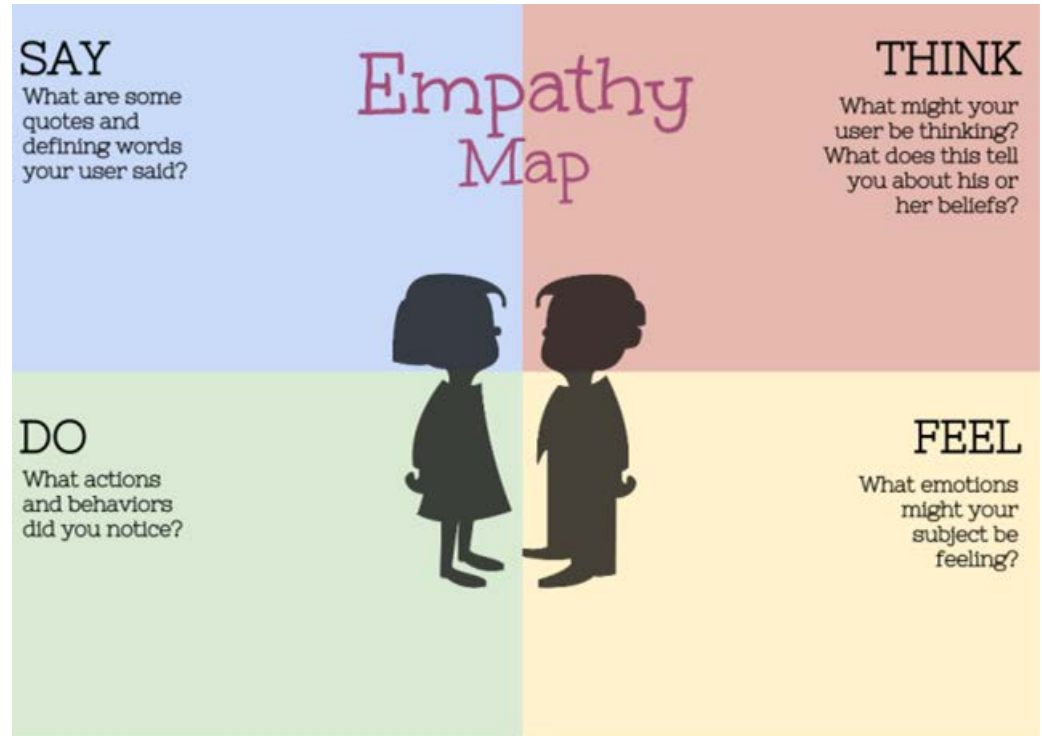
Share your experiences from shadowing, interviewing, observing.

Capture some of the things you heard people say, things they were doing or talked about doing, what they were thinking, how they might be feeling.

We are offering jamboards – you should use what serves your team best.

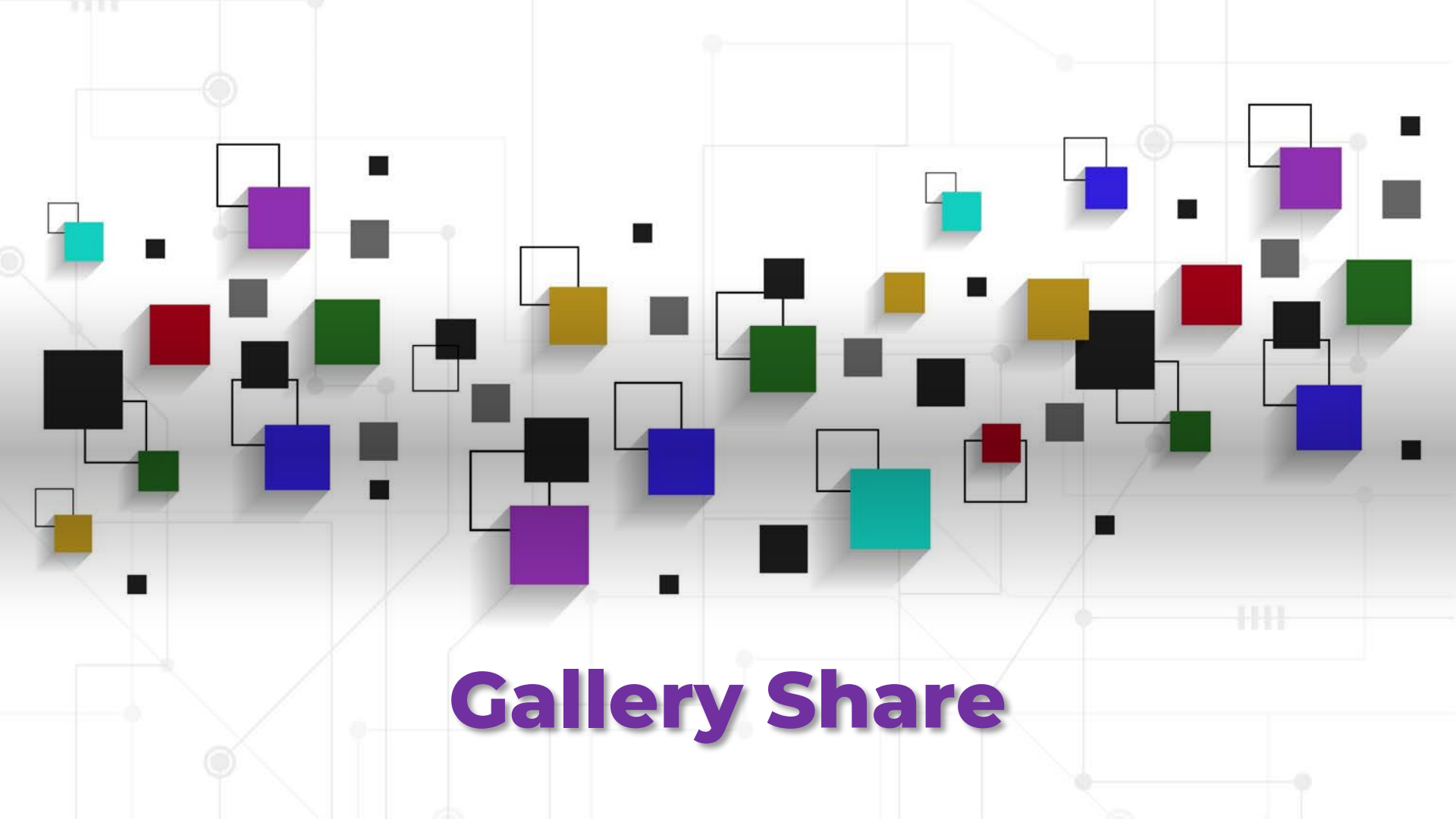
Create a storyboard of some of your insights.

Agree on one insight your team might like to share with the whole group.



Finally, find Needs and Insights of your user.

Created by @davidleedtecl
Info from IDEO (goo.gl/uJlQ8K)



Gallery Share





How might we identify spaces in our school community where connection naturally occurs?



—

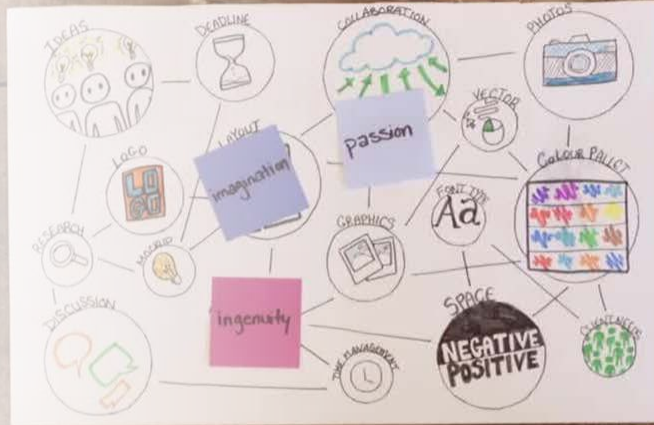
**How might we
identify
circumstances in
our school
community that
catalyze
disconnection?**

Team Design Time in Breakouts

Based on your sharing of interviews, observations, shadowing and creating your empathy map and storyboard – are there areas you would like to build upon or amplify to support connection at your school?

Are there areas that came up as opportunities to create new spaces or loose structures?

Did anything surface as a catalyst of disconnection that you need to let go?



Amplify, Create, Let Go



Next Steps

Individually reflect on the following:

How do you foster agency in your own work with yourself and each of your relationships.

In what ways do you bring belonging to yourself and each of your relationships?

What aspects of your environment stop you from being more connected to other people?

Sign up for Session Three

Share your name and a word or phrase about your team's connection today.





**Onward
& Be Well!**

Thanks!

Do you have any questions?

mlinda@jhu.edu

Please keep this slide for attribution

CREDITS: This presentation template was created by Slidesgo, including icons by Flaticon, infographics & images by Freepik, and illustrations by Storyset



